

# Product Data Sheet

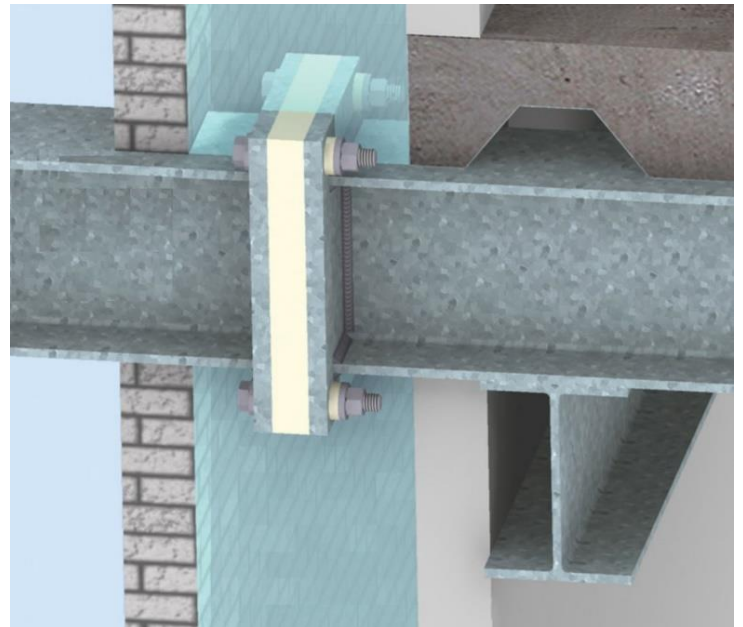
## GRM G-10/FR-4

### Benefits:

Reduces heat transfer between structural members  
Limited creep under load  
Flame Resistant  
Washers and bushings insulate bolts

### Design Data:

Machined and fabricated to your design  
Typical thicknesses: 1/4", 1/2", 3/4", 1", 2"



### Specification:

G-10/ FR-4, is a laminate sheet comprised of a flame retardant epoxy resin with a woven fiberglass substrate. This grade qualifies to NEMA FR-4 and MIL-I-24768/27

### Typical Properties

### Typical Value

### Units

Specific Gravity	1.85	
Water Absorption-.125"	< 0.1	%
Temperature Index	140 \ 284	°C \ °F
Rockwell Hardness	110	M scale
Bond Strength	> 2,200 \ 1,000	LBS \ kgs
Flexural Strength-LW-A-.125"	> 65,000 \ 448	PSI \ MPa
Flexural Strength-CW-A-.125"	> 50,000 \ 345	PSI \ MPa
Izod Impact Strength-LW	> 10	ft-lbs/in
Izod Impact Strength-CW	> 8	ft-lbs/in
Compressive Strength-Flatwise	> 60,000 \ 415	PSI \ MPa

[www.grmcp.com](http://www.grmcp.com)

**(936) 441-5910**

11133 I-45 S. Suite Q

Conroe, TX 77302



Request a quote:

[sales@grmcp.com](mailto:sales@grmcp.com)

Design or specification help:

[eng@grmcp.com](mailto:eng@grmcp.com)